



Hermitage
Academy

WELCOME TO YEAR 8

Welcome...

We're so pleased to have you with us as part of our school community. Our vision remains simple: we want you to enjoy coming to school each day, learn lots, and continue creating even more happy memories along the way.

As you move into the next academic year, we're here to support you every step of the way. We're excited to see all that you'll achieve this year and the positive contributions you'll continue to make to our Hermitage school community!

Mrs Maughan, Head of School

Meet the Team:

Year 8 Year Manager – Mrs Moores

The Year Manager is responsible for monitoring the wellbeing and behaviour of the students day-to-day. They will manage, monitor and work to improve (where necessary) behaviour and attendance. The Year Managers will be a channel of communication for parents and work with in-house and external support to provide a service of care to all students.

Year 8 Head of Achievement – Mrs Ford-Hutchinson

The Head of Achievement is responsible for the monitoring of the academic progress of your child. They work with subject areas and teachers and look closely at classwork, homework and assessments. If necessary, they can implement intervention programmes and study support to ensure your child's progress is supported and that strategies are in place for all students to make positive progress across their school career.

Both the Year Manager and the Head of Achievement work collaboratively to ensure your child is supported in both an academic and pastoral capacity throughout their time at school.

The Head of Achievement and Year Manager also work closely with the Head of Pastoral Care and the SENDCO to provide additional support in all aspects of school life.

Form tutors

Your form tutor will be the teacher who will see you at the start of every school day. They will check your uniform and equipment each morning and make sure you are ready for the day ahead.

Form Tutor	Location
8H1—Ms Chiarenza & Mrs Briggs	MF4
8H2—Mr Williams	SC7
8H3—Mr Duffy	RE1
8H4—Mrs Woonton	EN1
8A1—Mrs Robson and Mrs Heath	MU2
8A2—Miss Storey	TEC6
8A3—Miss Adamson	HU3
8A4—Miss Powell	HU8

Office 365

Every student at Hermitage Academy has an Office 365 account. This account allows them to access their school Outlook account (email and calendar); their OneDrive folder, Microsoft teams for virtual learning and our online virtual learning environment Student POD. As a member of Hermitage Academy, students will get the complete Microsoft Office suite for free to download onto home computers.

It is recommended to download and install office 365, email and the following apps onto a mobile phone or tablet:

One Drive

Word

Excel

SharePoint

One Note

PowerPoint

Having this resource at home will support homework and revision at home.

You can access Office365 from a link on our school website. Alternatively, go to www.office.com and use your school email and password to log in.

The school day

It is very important to be punctual to school every day, as each day will start with your form group and form tutor, where pupils will check that they are ready for the day ahead, hear important messages and find out about events happening in the week ahead. Across the week, in form time, you will complete: World Ready, Reading, Careers and attend an assembly.

Mondays (Both Week 1 and Week 2)	
Extended form (World Ready)	08:25 - 09:15
Lesson 1	09:15 – 10:10
Lesson 2	10:10 – 11:05
Break	11:05 – 11:25
Lesson 3	11:25 – 12:25
Lunch	12:25 – 13:10
Lesson 4	13:10 – 14:05
Lesson 5	14:05 – 15:00

Tuesday – Friday (both Week 1 and Week 2)	
Form time	08:25 – 08:50
Lesson 1	08:50 – 09:50
Lesson 2	09:50 – 10:50
Break	10:50 – 11:10
Lesson 3	11:10 – 12:15
Lunch	12:15 – 13:00
Lesson 4	13:00 – 14:00
Lesson 5	14:00 – 15:00

We run on a two-week timetable (Week 1 and 2) made up of 25 lessons each week.

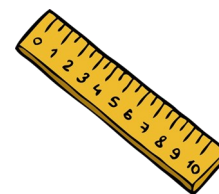
Weekly Lessons

In Year 8, most students' timetables consist of the following lessons, although some students receive extra support in Maths and English.

Subject	Lessons per fortnight	Subject	Lessons per fortnight
English	8	History	4
Maths	8	Geography	4
Science	8	ICT	2
Art	2	PE	4
Technology	2	Spanish	4
RE	2	Music	1
Drama	1		



Equipment



It is incredibly important that you come to school equipped for the day and you have to bring this yourself! It is **compulsory** for students to carry a pencil case with the following equipment:

- 2 black pens
- 2 green pens
- 2 pencils
- 1 ruler
- 1 eraser
- 2 highlighters
- 1 glue stick
- 1 scientific calculator – we recommend the CASIO FX-85GTCW

You will also need to bring a bag every day, **large enough to carry an A4 size file for homework/exercise book and PE kit.**

Form Tutors will check that you have these items every day and you will be flagged if you don't, which could lead to a sanction. Our Library has items that you can purchase, if something breaks or runs out.

Menu 2025-26

Students will have access to hot meals in the Dining Hall, as well as a range of sandwiches and salad options. The Main Hall offers our 'Grab & Go' food. The year groups will operate on a rota for who is first in throughout the year.

The cost will be £2.80 for a school meal. This price will be subject to review in the Autumn term due to anticipated inflation costs.

LUNCH MENU - WEEK 1					
	MON	TUE	WED	THU	FRI
Traditional main	CHINESE CHICKEN NOODLES	HOMEMADE SAUSAGE ROLL	ROAST CHICKEN OR CUMBERLAND SAUSAGE DINNER	COTTAGE PIE	CRISPY CHICKEN AND CHIPS
Vegetarian option	CHEESE AND ONION PASTY	QUORN CHILLI TACOS	QUORN SAUSAGE DINNER	JACKET POTATO WITH VARIOUS FILLINGS	SPICY BEAN BURGER
Grab & Go	PEPPERONI PANINI MARGHERITA PANINI SPICY MEATBALL PASTA RUSTIC TOMATO PASTA	CHICKEN WRAP CHICKEN AND BACON PASTA TOMATO & BASIL PASTA	BBQ CHEESE AND BACON PANINI MARGHERITA PANINI CHICKEN KORMA CURRY & RICE	CHICKEN WRAP BEEF BOLOGNESE PASTA SPICY TOMATO PASTA	CHICKEN PIZZINI MARGHERITA PIZZINI CHIPS WITH CURRY SAUCE, BEANS, CHEESE OR GRAVY
Dessert	APPLE CRUMBLE AND CUSTARD	GINGER CAKE AND CUSTARD	CHOCOLATE CRUNCH WITH CUSTARD	RICE PUDDING WITH PEACH SLICES	FRESH FRUIT SALAD

LUNCH MENU - WEEK 2					
	MON	TUE	WED	THU	FRI
Traditional main	CHICKEN KORMA CURRY	SAUSAGE AND MASH WITH ONION GRAVY	ROAST CHICKEN OR BACON CHOP DINNER	BEEF CHILLI AND RICE	BEEF BURGER AND CHIPS
Vegetarian option	JACKET POTATOES WITH CHEESE	VEGETABLE SPRING ROLL WITH CURRY NOODLES	QUORN SAUSAGE DINNER	HOMEMADE CHEESE AND ONION TART	VEGAN NUGGETS WITH CHIPS
Grab & Go	PEPPERONI PANINI MARGHERITA PANINI SPICY MEATBALL PASTA RUSTIC TOMATO PASTA	CHICKEN WRAP CHICKEN AND BACON PASTA TOMATO & BASIL PASTA	BBQ CHEESE AND BACON PANINI MARGHERITA PANINI CHICKEN KORMA CURRY & RICE	CHICKEN WRAP BEEF BOLOGNESE PASTA SPICY TOMATO PASTA	CHICKEN PIZZINI MARGHERITA PIZZINI CHIPS WITH CURRY SAUCE, BEANS, CHEESE OR GRAVY
Dessert	APPLE AND BLACKBERRY CRUMBLE	CHOCOLATE ORANGE CAKE WITH CUSTARD	STICKY DATE PUDDING WITH TOFFEE SAUCE	HOMEMADE FLAPJACK WITH CUSTARD	FRESH FRUIT SALAD

LUNCH MENU - WEEK 3					
	MON	TUE	WED	THU	FRI
Traditional main	MINCED BEEF AND DUMPLINGS	CHICKEN TIKKA MASALA CURRY WITH RICE	ROAST CHICKEN OR BRAISED BEEF DINNER	CORNED BEEF PIE	CRISPY FISH AND CHIPS
Vegetarian option	JACKET POTATO WITH CHEESE AND BEANS	MACARONI CHEESE	QUORN SAUSAGE DINNER	BREADED QUORN NUGGETS WITH SPICY WEDGES	MARGHERITA PIZZA AND CHIPS
Grab & Go	PEPPERONI PANINI MARGHERITA PANINI SPICY MEATBALL PASTA RUSTIC TOMATO PASTA	CHICKEN WRAP CHICKEN AND BACON PASTA TOMATO & BASIL PASTA	BBQ CHEESE AND BACON PANINI MARGHERITA PANINI CHICKEN KORMA CURRY & RICE	CHICKEN WRAP BEEF BOLOGNESE PASTA SPICY TOMATO PASTA	CHICKEN PIZZINI MARGHERITA PIZZINI CHIPS WITH CURRY SAUCE, BEANS, CHEESE OR GRAVY
Dessert	TOFFEE APPLE CRUMBLE WITH CUSTARD	CHOCOLATE CRUNCH WITH CUSTARD	STEAMED SYRUP SPONGE WITH CUSTARD	CORNFLAKE TART WITH CUSTARD	FRESH FRUIT SALAD

World Ready

Our PSHE World Ready programme helps children develop their character, including mental wellbeing, sense of purpose, and independence, allowing them to become strong adults. It is a very thorough course and is delivered over the full 7 years that pupils spend with us.

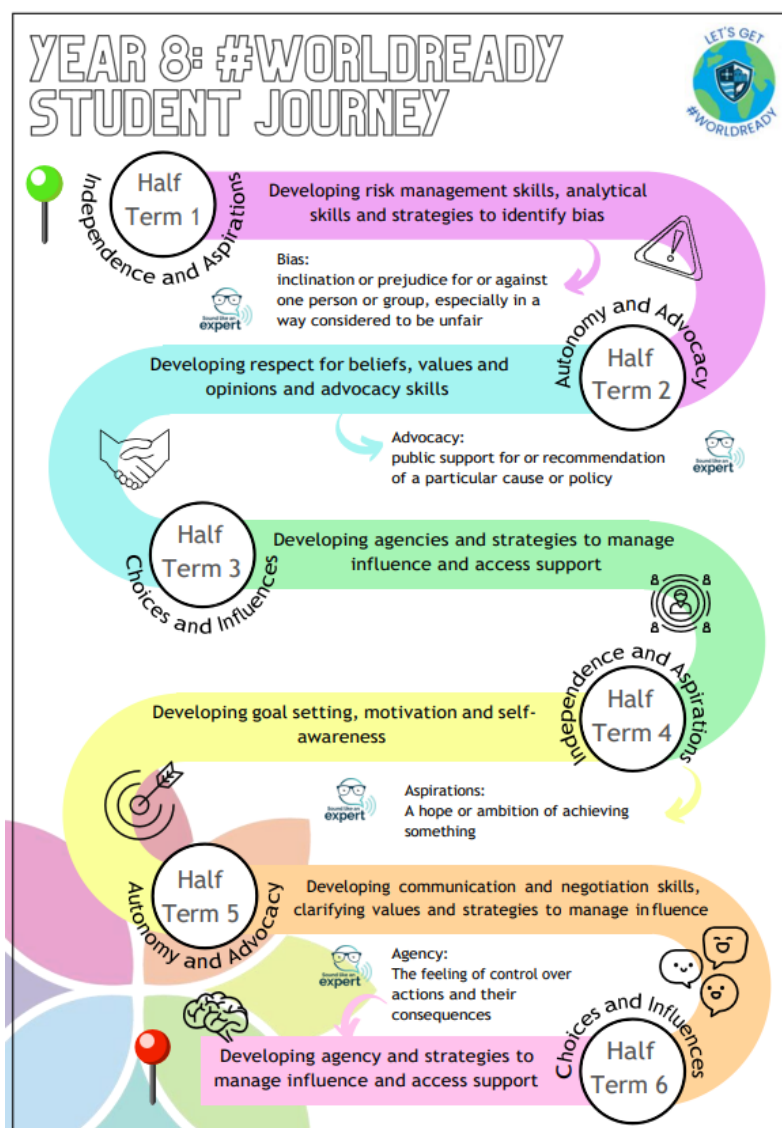
We study topics such as British Values, healthy relationships, how our body changes, being safe both online and offline, leading a healthy lifestyle and effective revision strategies.

We also look at topics not usually covered in other subjects, such as finance and money management, community topics and careers.

We do a lot of discussion and group work in World Ready, which will develop your confidence and allow you to demonstrate great leadership skills and teamwork.

You will have a workbook to write down your ideas and every topic will have a detailed knowledge organiser to work from.

This is what your year in World Ready will look like:



Next Steps

Careers Programme Overview Hermitage Academy Year 8

THE CAREERS &
ENTERPRISE
COMPANY

Vision Statement

Our students are ambitious with their career choices and have a clear understanding of how their time in school directly affects their career after.

Contact: Michelle Wake

Email: Michelle.pearce@hermitageacademy.co.uk

Telephone: 01913887161

Milestones and Learning Outcomes

Half Term 1

Be able to identify and make effective use of available support systems.

Half Term 2

Understand how recruitment and selection processes work (including interviews and assessment centres) and what they need to do to succeed in them

Half Term 3

Understand how the local and national labour market is changing and what this might mean for their career choices.

Half Term 4

Have developed essential skills which will support them to transition to the workplace.

Half Term 5

Be inspired and motivated by career opportunities which they may not have otherwise considered

Half Term 6

Understand the expectations, behaviours, and cultures of a range of workplaces

Year 9 Key LO

Have a clear understanding of the learning pathways and qualifications that they will need to pursue their career goals

Key Events and Experiences

Half Term 1

Meet the Careers Team
Log Aspirations & Destinations
NCL Uni: What Course?
College assembly
Reg: Unifrog, Interests, Interests Profile

Half Term 2

DWP: Skills for work
Assembly: LMI
Reg: CV Workshop, Apprenticeships, Skills for Careers, Different Routes

Half Term 3

NHS Theatres: NHS Careers
University Trips
Reg: Challenges & Rewards, Healthcare, NHS Roles
Careers Fair
FSQ Questionnaire

Half Term 4

DWP: Skills and Values
Careers Workshops
Barclays Mobile Bank Coding
Reg: Create the Life you Want

Half Term 5

Apprenticeships workshop
Careers Outreach
Reg: Success, Money, LMI, Read Watch Listen

Half Term 6

Career Day Visit
Resilience workshop
Reg: Careers & Climate, Climate Crisis x 2, Global Effort x 2, Sustainability

Year 9 Key Events

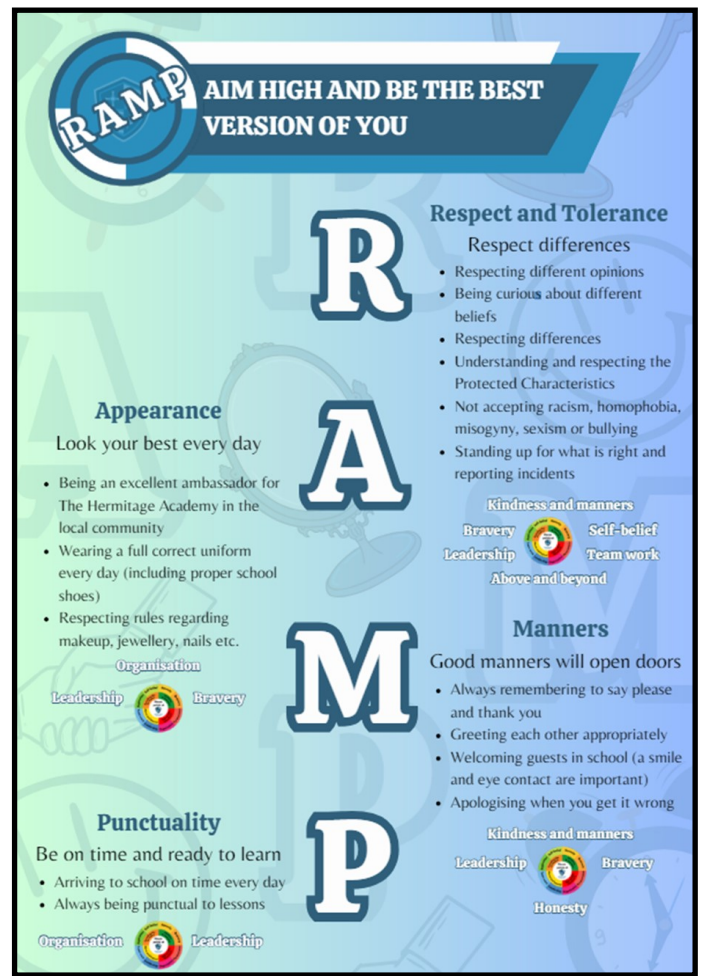
Guidance Interviews
GCSE Option Choices
University Engagement
Careers Fairs
Experiences of the Workplace

Inspiring and preparing young people for the world of work.

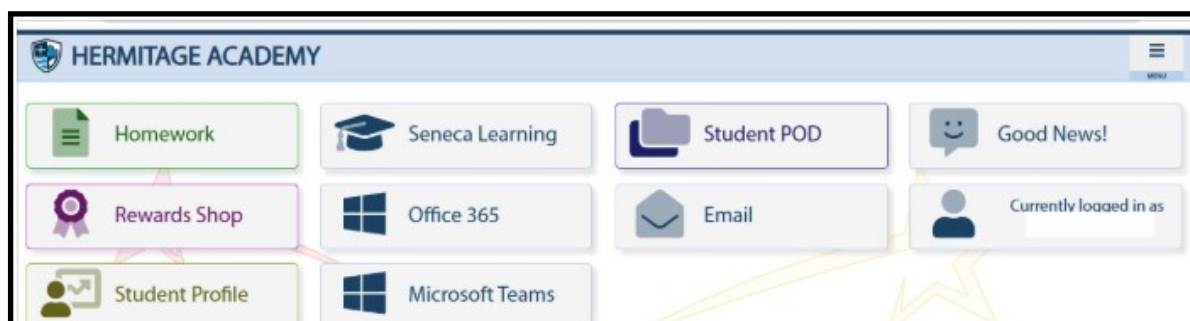
RAMP

When in school we always want you to do your best. In school we will expect you to: **R**espect each other, yourselves, your teachers and our school; to look your best every day and think about your **A**pppearance; to have excellent **M**anners and have excellent **P**unctuality, by being on time for school and your lessons every day.

EASI



EASI is the system we use in school, that has everything you need to know and access in one place, making it really 'easy' for you to get through your week in school. When you arrive, you will be given your own EASI login, where you can check how many positive points you have received, buy items from our reward shop, check your homework and also check if you have been given any consequences or detentions. You can also access Office365, your school email, Student Pod and Teams - all important programs that you will need for school and homework. You will receive a login and a password that both you and your parents can use.



Rewards

We LOVE celebrating success, and we reward students with house points and other prizes. We regularly hand out house points in and out of lessons, for great teamwork, going above and beyond, bravery and high quality homework, amongst others. In fact there are TWELVE categories where you can score points!



As well as house points, we award postcards, certificates and lapel pins. We celebrate success every week in our assemblies, and we have a huge celebration assembly at the end of the Autumn and Summer terms. We do regular shout outs on social media, and you can cash in your points for stationery, queue-jump passes and free food!

In addition, we hold a termly 'Culture Vultures' challenge to all students, where you can choose a range of tasks to complete, allowing you to broaden your knowledge on topics not normally covered in subject lessons.

Houses

The house system is about encouraging you to be your best and work towards excellence in all that you do. Every house point earned by you goes into your house grand total. We love the spirit of competition and it is always exciting to see which house has won the competition each term!

Each house is named after a quality we aim to embody: Ambition, Evolution, Synergy and Integrity. Regardless of what house you are placed in, we want you to excel and exemplify all of the traits that your house holds.



Uniform



- Navy blazer, Navy V-neck jumper (optional) or cardigan with embroidered school badge, Navy tartan pleated skirt and School tie – only available from Emblematic
- Pale blue school shirt
- Plain navy straight cut trousers – available from Emblematic. Trousers must not have stripes and must not have any adornments or fashion zips. No combats, no jeans, no jeggings or leggings are permitted.
- Plain navy formal knee length shorts, of the same material as school trousers, during the summer term. No jeans, cargo style, leggings, stretchy or tracksuit style. PE shorts, in all styles are not allowed.
- Plain black, formal, leather or leather style shoes which can be polished. No trainers, plimsolls, pumps, boots or converse shoes.
- Socks must be navy, black or dark grey. They must be ankle socks or longer. Trainer liners are not permitted.
- Tights must be plain navy, black or grey.

PE Kit:

- Sector polo, Sector panel shorts and/or skirt and/or cuffed tracksuit pants and/or leggings, Knee high navy sports socks - only available from Emblematic.
- Trainers must be worn in PE lessons.
Plimsolls, Converse, or canvas type shoes are not suitable. Students are advised to wear football boots for football and rugby. Optional items are available and can be viewed on the website.

General Appearance:

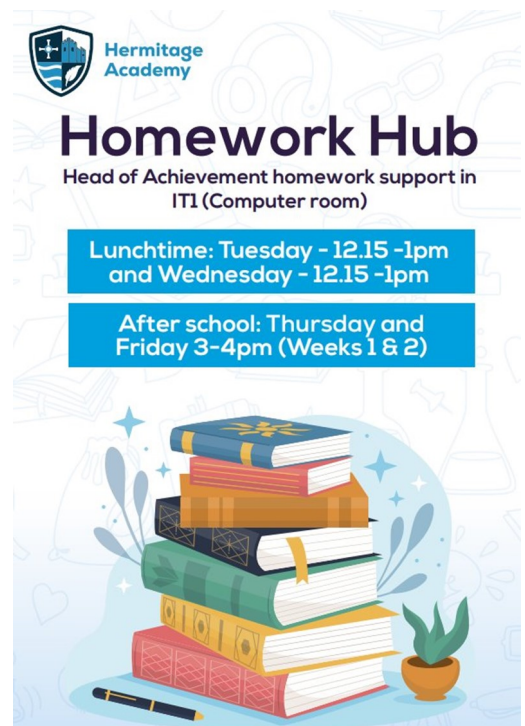
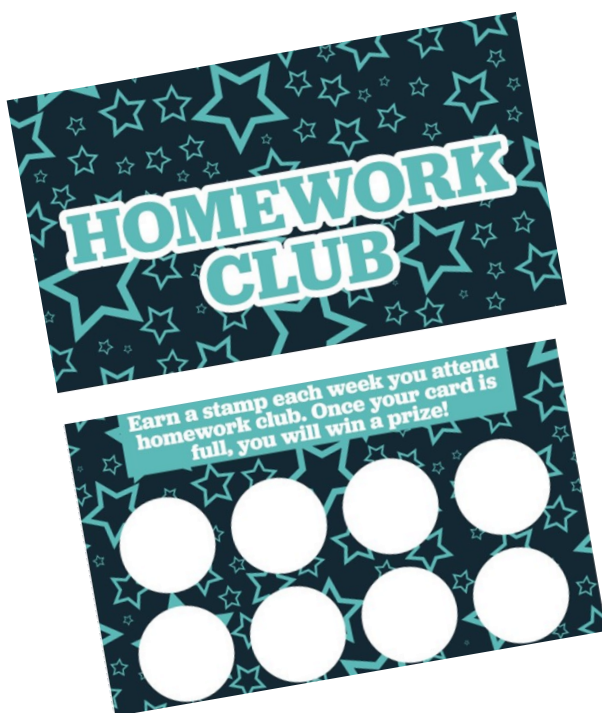
- Makeup should not be visible.
- False eyelashes are not to be worn.
- Nails are not to be painted and false nails are not to be worn.
- Haircuts should not be less than a 1
- Students are not permitted to have tram lines or sculptures in their hair or any extreme hairstyles.
- Students should not dye their hair an unnatural colour

POD

Hermitage has a virtual learning environment called Student POD. Student POD has all the information about the subjects you study including Knowledge Organisers, topic resources and helpful tools and information for revision. This is where all online textbooks for your children are stored. You log onto Student POD by logging on to your Office 365 account and clicking the SharePoint app.

Homework Hub

Homework Hub is a great opportunity to complete homework and gain support with organisation. Heads of Achievement staff Homework Hub to help students if they are struggling with any particular pieces of homework or would just like some support in keeping on top of it! Students are rewarded for attending with House Points and the Homework Hub loyalty card.





Hints & tips

We want you to be ready for everything at school. To prepare you for September, here are some hints and tips for success:

- Make sure that you may have your bag packed the evening before and everything you need for the day ahead will be to hand.
- That is right... you still **MUST** bring a bag to school with your completed homework in a plastic wallet and all equipment needed for your school day. (PE kit, ingredients, drink bottle).
- Ensure you have access to your timetable, it could be advised that you carry one in your pencil case, top pocket and have one at home.
- There is never a good reason to be disrespectful to another person. Whether it be your peers, our teaching staff or our support and kitchen staff; everybody deserves respect. Be polite. Say please and thank you. Hold doors open for people. Clear up your own mess. Place rubbish in the bin. Smile.
- Work will get more intense but the expectations of you will also – homework, assessments and revision will all be a key focus.
- Punctuality is key! Make sure you are on time at the start of the school day. Ensure transitions between lessons are swift and effective.
- Take ownership of any missed lesson work. This is your opportunity to catch up and bridge any gaps. This is an opportunity to embed effective practice for future GCSE study.



- Keep up the momentum from Year 7 – Year 8 is an important year group to prepare you for the next stages.
- More responsibility – you are no longer the 'youngest' in the school and the Year 7's will look up to you and you need to set a good example.
- Make the most of trips and opportunities outside of the classroom.
- Attend school – Poor attendance will stop you enjoying the fun things mentioned above!



Key Dates

Date	Event
October 8th—November 10th 2025	Assessment Window
October 9th 2025	Parent Information Evening
February 9th-20th 2026	Assessment Window
April 1st 2026	Parents' Evening
June 8th-22nd 2026	Assessment Window

Daily Checklist

Night Before

- ☐ EASI checked and homework completed
- ☐ Check your school email for any important messages
- ☐ Timetable checked - PE Kit prepared if needed
- ☐ Uniform checked and prepared
- ☐ Shoes cleaned
- ☐ Packed lunch made (if needed) and snacks organised
- ☐ Equipment (full pencil case) and homework folder in bag
- ☐ 20 minutes of relaxation, such as reading, before bed

Morning Checks

- ☐ Uniform on
- ☐ Breakfast eaten
- ☐ Teeth brushed
- ☐ Packed lunch in bag
- ☐ Break time snack in bag
- ☐ Water bottle full and in bag
- ☐ Double check equipment (pencil case and homework folder) and PE kit in bag (If needed)
- ☐ Bus money safe in bag (if needed)
- ☐ House key and mobile phone in bag and switched off

Consider making your own personalised checklist that you can place on your fridge or bedroom wall, to help you to remember what to do each day and stay organised!

SCIENCE DEPT.	COMMUNAL GRASS
MATHS DEPT.	DRAMA DEPT.
CRJ/2.	P.E DEPT.
OFFICE/SHARED SPACES	HUMANITIES DEPT.
ART/PHOTOGRAPHY DEPT.	ENGLISH DEPT.
LANGUAGES DEPT.	BUSINESS/IT DEPT.
R.E DEPT.	TECHNOLOGY DEPT.
SIXTH FORM BLOCK	MUSIC DEPT.

HERMITAGE ACADEMY SITE MAP



HERMITAGE ACADEMY



North East Learning Trust



Main gates (for students)

Main gates (for vehicles)

SIXTH FORM

GROUND FLOOR

UPPER FLOOR

MAIN ENTRANCE

Car Park

GROUND FLOOR

SPORTS HALL (OUTSIDE BUILDING)

THE HUB (OUTSIDE BUILDING)

WELLBEING GARDEN

BSU

WC

WC

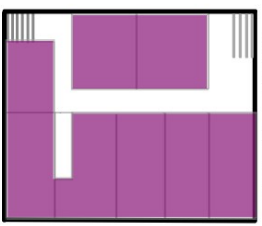
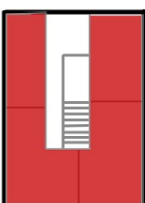
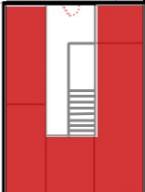
WC

LIBRARY

MAIN OFFICE

MAIN HALL

ISC



UPPER FLOOR